

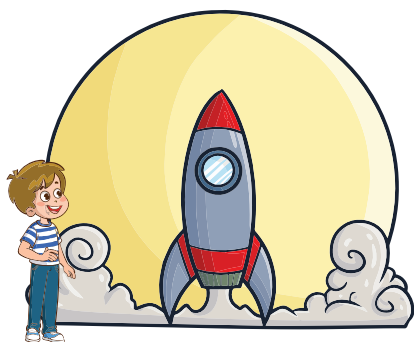
# New English Leaders

Book 2  
Worksheets



## Worksheet

1. Complete the sentences with *this*, *that*, *these*, or *those*.



A. \_\_\_\_\_ is a rocket right here.



B. \_\_\_\_\_ are butterflies close to me.



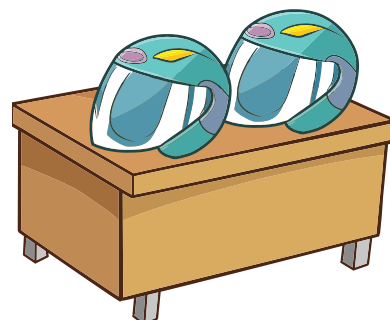
C. \_\_\_\_\_ is a fountain over there.



D. \_\_\_\_\_ are tomatoes in this basket.



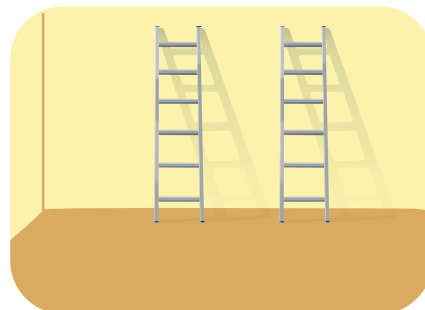
E. \_\_\_\_\_ is a telescope.



F. \_\_\_\_\_ are helmets right next to me.



G. \_\_\_\_\_ is a castle far away on the hill.



H. \_\_\_\_\_ are ladders leaning against that wall.

2. Complete with *is* or *are*.



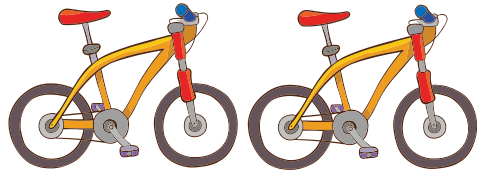
A. This \_\_\_\_\_ a laptop.



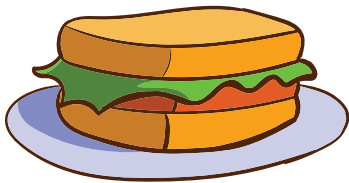
B. That \_\_\_\_\_ a lighthouse.



C. These \_\_\_\_\_ balloons.



D. Those \_\_\_\_\_ bicycles.



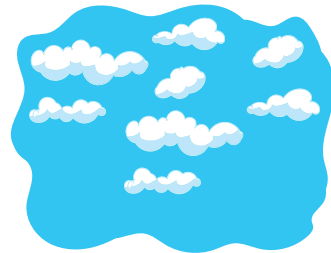
E. This \_\_\_\_\_ a sandwich.



F. That \_\_\_\_\_ a bridge.



G. These \_\_\_\_\_ crayons.



H. Those \_\_\_\_\_ clouds.

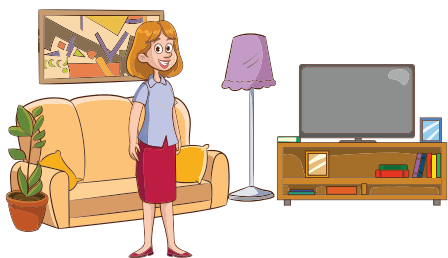
3. Find the mistakes in the sentences below, and then rewrite them correctly.

A. This are a flashlight. \_\_\_\_\_

B. These is pillows. \_\_\_\_\_

## Worksheet

1. Complete the sentences with *is*, *are*, or *am*.



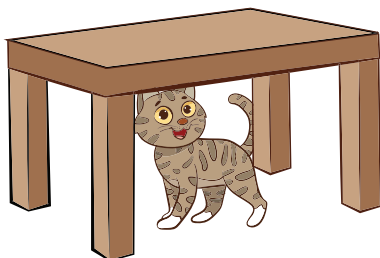
A. She \_\_\_\_\_ my  
aunt.



B. They \_\_\_\_\_ at  
the park.



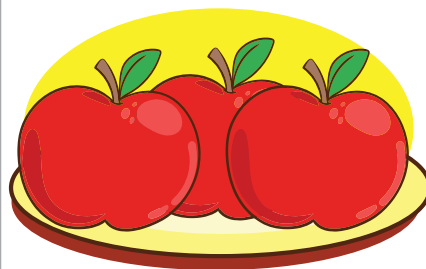
C. I \_\_\_\_\_ very happy  
today.



D. The cat \_\_\_\_\_  
under the table.



E. You \_\_\_\_\_ my best  
friend.



F. The apples \_\_\_\_\_  
on the plate.



G. We \_\_\_\_\_ in the  
classroom.



H. My dad \_\_\_\_\_ at work.



**2. Make negative sentences, form questions, and answer them.**

**A. It is my pen.**

• Negative: \_\_\_\_\_

• Question: \_\_\_\_\_

• Answer: \_\_\_\_\_

**B. They are in the room.**

• Negative: \_\_\_\_\_

• Question: \_\_\_\_\_

• Answer: \_\_\_\_\_

**3. Find the mistakes in the sentences below, and then rewrite them correctly.**

A. Sara are seven years old. \_\_\_\_\_

B. The students is in the class. \_\_\_\_\_

## Worksheet

1. Complete the sentences with *have got*, *has got*, *haven't got*, or *hasn't got*.



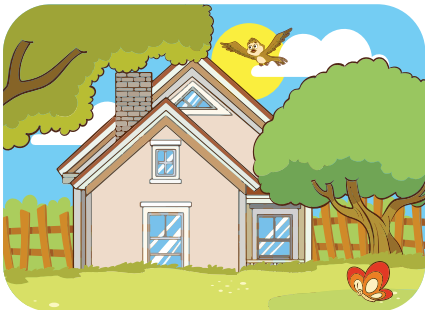
A. Emma \_\_\_\_\_ a  
pink dress.



B. They \_\_\_\_\_ a  
football.



C. He \_\_\_\_\_ a  
school backpack.



D. We \_\_\_\_\_ a  
big garden.



E. I \_\_\_\_\_ a  
blue kite.



\_\_\_\_\_



G. My brother \_\_\_\_\_  
a toy train.



H. You \_\_\_\_\_  
a new book.

**2. Make negative sentences, form questions, and answer them.**

**A. It has got two legs.**

• Negative: \_\_\_\_\_

• Question: \_\_\_\_\_

• Answer: \_\_\_\_\_

**B. They have got a new car.**

• Negative: \_\_\_\_\_

• Question: \_\_\_\_\_

• Answer: \_\_\_\_\_

**3. Find the mistakes in the sentences below, and then rewrite them correctly.**

A. Sara have got two brothers. \_\_\_\_\_

B. The students has five classes today. \_\_\_\_\_

## Worksheet

## 1. Complete each sentences with the correct form of the verb.



A. She \_\_\_\_\_ (read)  
a book before bed.



B. They \_\_\_\_\_  
(not, play) football on  
Sundays.



C. He \_\_\_\_\_ (eat)  
vegetables every day.



D. I \_\_\_\_\_ (not,  
watch) cartoons in the  
evening.



E. My dad \_\_\_\_\_  
(cook) dinner for us.



F. The dog \_\_\_\_\_  
(not, bark) at strangers.



G. We \_\_\_\_\_ to the  
park on Fridays.



H. You \_\_\_\_\_ (not, drink)  
coffee in the morning.

## 2. Make the sentences negative.

A. She likes ice cream.

---

B. He plays the piano.

---

C. I drink coffee in the morning.

---

D. We watch TV at night.

---

E. You eat vegetables every day.

---

## 3. Find the mistakes in the sentences below, and then rewrite them correctly.

A. My brother don't help me with my homework.

---

B. The cat sleep on the sofa.

---

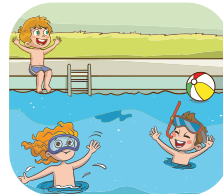
## Worksheet

## 1. Choose the correct answers.



● ● ● ● ● ● ●

A. He (always / never) brushes his teeth before bed.



● ● ● ○ ○ ○ ○

B. They (sometimes / always) go swimming on Saturdays.



● ● ● ● ● ○

C. She (usually / never) eats chocolate after lunch.



● ● ● ● ○ ○

D. We (never / often) ride our bikes in the park.



● ● ● ● ● ●

E. The cat (always / sometimes) sleeps under the table.



○ ○ ○ ○ ○ ○ ○

F. I (usually / never) forget my school bag.



● ● ● ● ○ ○

G. Oliver (often / never) helps his dad in the garden.



● ● ● ● ● ●

H. They (always / never) drink tea in the evening.

**2. Make negative sentences, form questions, and answer them.**

**A. Sarah plays football every day.**

• Negative: \_\_\_\_\_

• Question: \_\_\_\_\_

• Answer: \_\_\_\_\_

**B. We sometimes go to the park.**

• Negative: \_\_\_\_\_

• Question: \_\_\_\_\_

• Answer: \_\_\_\_\_

**3. Find the mistakes in the sentences or questions below, and then rewrite them correctly.**

A. Does she plays with her sisters? \_\_\_\_\_

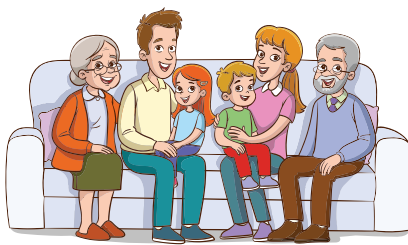
B. Do he watch TV? Yes, they do. \_\_\_\_\_

## Worksheet

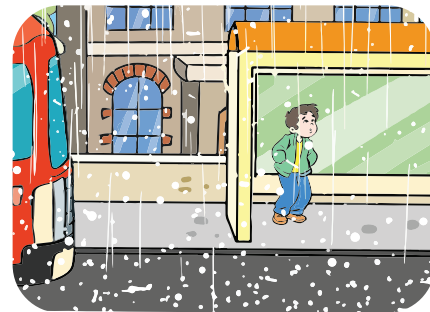
## 1. Complete each sentence with 'was' or 'were.'



A. The baby \_\_\_\_\_  
asleep in the crib.



B. My grandparents  
\_\_\_\_\_ at our  
house yesterday.



C. The weather \_\_\_\_\_  
cold last night.



D. The children \_\_\_\_\_  
excited for the school trip.



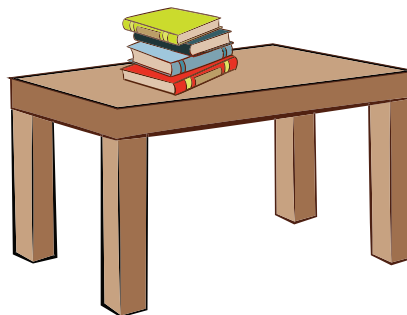
E. Olivia \_\_\_\_\_  
nervous before her  
speech.



F. The dogs \_\_\_\_\_  
very playful at the park.



G. Dad \_\_\_\_\_ tired  
after work.



H. The books \_\_\_\_\_ on  
the table.



## 2. Make the sentences negative.

A. I was happy.

---

B. My sister was sad.

---

C. They were scared.

---

D. My brother was brave.

---

E. We were excited.

---

## 3. Find the mistakes in the sentences below, and *then* rewrite *them* correctly.

A. Lily were bored. \_\_\_\_\_

B. They wasn't at their home. \_\_\_\_\_

## Worksheet

## 1. Complete each question with 'Was' or 'Were.'



A. \_\_\_\_\_ the children  
at the playground?



B. \_\_\_\_\_ she at the  
shopping mall  
yesterday?



C. \_\_\_\_\_ your  
grandparents at home  
last night?



D. \_\_\_\_\_ it a sunny  
day yesterday?



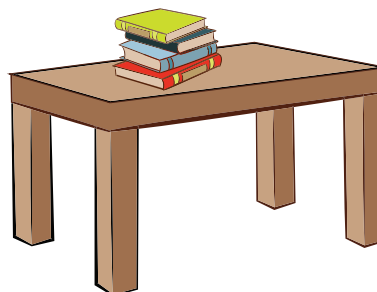
E. \_\_\_\_\_ we in the  
park?



F. \_\_\_\_\_ the dogs  
very playful at the park?



G. \_\_\_\_\_ Dad tired after  
work?



H. \_\_\_\_\_ the books on  
the table?

**2. Make negative sentences, form questions, and answer them.**

**A. Adam was at home yesterday.**

• Negative: \_\_\_\_\_

• Question: \_\_\_\_\_

• Answer: \_\_\_\_\_

**B. The kids were at school last Monday.**

• Negative: \_\_\_\_\_

• Question: \_\_\_\_\_

• Answer: \_\_\_\_\_

**3. Find the mistakes in the questions below, and then rewrite them correctly.**

A. Was you sad? \_\_\_\_\_

B. Was Where she yesterday? \_\_\_\_\_

## Worksheet

1. Complete the sentences with "my" or "mine."



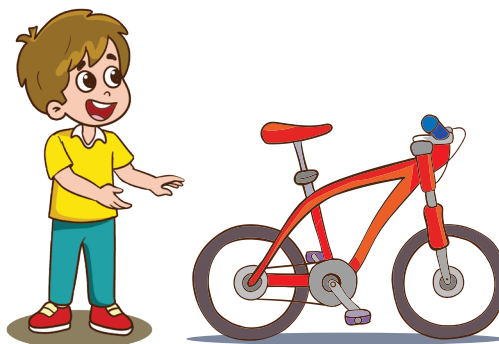
A. This is \_\_\_\_\_ puppy.



B. This book is \_\_\_\_\_.



C. I forgot \_\_\_\_\_ umbrella at home.



D. That red bicycle is \_\_\_\_\_.



E. This is \_\_\_\_\_ scarf.



F. This football is \_\_\_\_\_.

## 2. Complete the sentences with "your" or "yours."



A. This is \_\_\_\_\_ water bottle.



B. This pair of gloves is \_\_\_\_\_.



C. This is \_\_\_\_\_ notebook.



D. This scooter is \_\_\_\_\_.



E. This is \_\_\_\_\_ backpack.



F. This pair of sunglasses is \_\_\_\_\_.

## 3. Find the mistakes in the sentences below, and then rewrite them correctly.

A. This book is mine book. \_\_\_\_\_

B. This is yours cat. \_\_\_\_\_

## Worksheet

## 1. Complete each sentence with 'can' or 'can't.'



A. Tom \_\_\_\_\_ swim  
very fast.



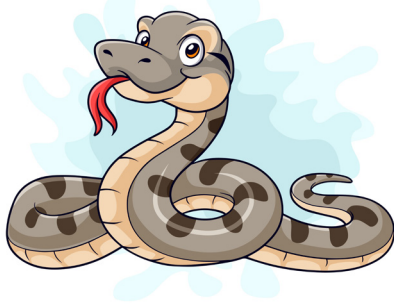
B. Cats \_\_\_\_\_ climb  
trees easily.



C. A horse \_\_\_\_\_ fly  
in the sky.



D. We \_\_\_\_\_ play  
football in the park.



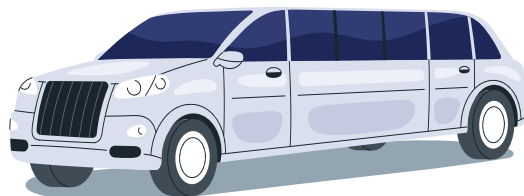
E. A snake \_\_\_\_\_  
jump.



F. My sister \_\_\_\_\_  
cook delicious meals.



G. A penguin \_\_\_\_\_  
climb trees.



H. You \_\_\_\_\_ lift a car.

**2. Make negative sentences, form questions, and answer them.**

**A. Suzi can draw beautiful trees.**

● Negative: \_\_\_\_\_

● Question: \_\_\_\_\_

● Answer: \_\_\_\_\_

**B. The kids can run fast.**

● Negative: \_\_\_\_\_

● Question: \_\_\_\_\_

● Answer: \_\_\_\_\_

**3. Find the mistakes in the sentences below, and then rewrite them correctly.**

A. A horse can fly in the sky. \_\_\_\_\_

B. The fish can't swim. \_\_\_\_\_

**1. Complete each sentence with the correct superlative adjective form.**

- A. This schoolbag is the \_\_\_\_\_ (light) of all.
- B. This tree is the \_\_\_\_\_ (tall) in the park.
- C. This river is the \_\_\_\_\_ (long) in the country.
- D. My grandma is the \_\_\_\_\_ (old) in the family.
- E. This mountain is the \_\_\_\_\_ (high) in the world.
- F. My shoes are the \_\_\_\_\_ (clean) in my house.
- G. My bed is the \_\_\_\_\_ (soft) in the room.
- H. This puppy is the \_\_\_\_\_ (small) of all the others.
- I. This road is the \_\_\_\_\_ (wide) in the city.
- J. This train is the \_\_\_\_\_ (fast) one.



**2. Rearrange the words to form correct sentences.**

A. is / the sharpest. / My pencil

---

B. the sweetest / The cake / dessert. / is

---

C. is / the strongest / My dad / man.

---

D. The ocean / the deepest. / is

---

**3. Find the mistakes in the sentences below, and then rewrite them correctly.**

A. This is the fast car in the world.

---

B. That is highest mountain.

---